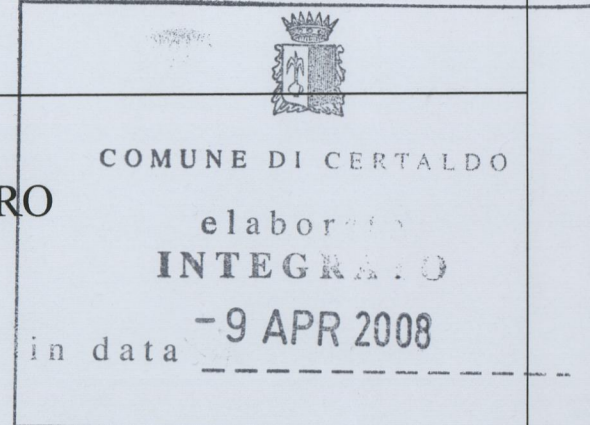


Allegato 9/18 alla deliberazione
n. 81, cc. del 29.09.08

Comune di Certaldo

Oggetto: PIANO DI RECUPERO
"I GIUGGIOLI"



Ubicazione: Località Falisca

Proprietà: Bardi Leopoldangelo

Il Progettista: Dott. Arch. Barbara Bertini



Tavola n° 4

RILIEVO STATO ATTUALE - Edifici B) e C)
CALCOLO DEL VOLUME
Scala 1:100

09 APR. 2008

Dott. Arch. Barbara Bertini - Geom. Fabio Sodini - Fabio Leti - Roberto Giovi - Ruggero Trentanovi - C.F. e P.IVA 0419085 048 9
Viale Giacomo Matteotti, 60 - 50052 CERTALDO (FI) - Tel. 0571/652208 Fax 0571/637714 - E-mail apogeostudio@libero.it

CALCOLO VOLUME ATTUALE

FIENILE 1
Superficie ml. $6.15 \times 4.40 =$ mq. 27.06
Altezza (ml. $4.90 + 5.80$)/2 = ml. 5.35
Volume mq. 27.06 x ml. 5.35 = mc. 144.77

FIENILE 2
Superficie ml. $6.15 \times 4.60 =$ mq. 28.29
Altezza (ml. $8.00 + 8.90$)/2 = ml. 8.45
Volume mq. 28.29 x ml. 8.45 = mc. 239.05

FIENILE 3
Superficie ml. $4.00 \times 4.60 =$ mq. 18.40
Altezza (ml. $3.15 + 2.50$)/2 = ml. 2.83
Volume mq. 18.40 x ml. 2.83 = mc. 52.07
mc. 435.89

FIENILE PICCOLO
Superficie ml. $4.70 \times 6.00 =$ mq. 28.20
Sup. Prosp. (ml. 4.70×2.80) + (ml. 4.70×0.50)/2 = mq. 14.34
(ml. $2.80 + 3.05$)/2 x ml. 6.00 = mq. 17.55
[(ml. $3.05 + 3.90$)/2 + (ml. 0.50 /2)] x ml. 4.70 = mq. 17.51
(ml. $2.80 + 3.90$)/2 x ml. 6.00 = mq. 20.10
mq. 69.50

Perimetro ml. $4.70 + 6.00 + 4.70 + 6.00 =$ ml. 21.40

Volume mq. 69.50 / ml. 21.40 = ml. 3.248 x mq. 28.20 = mc. 91.59

LEGNAIA
Superficie ml. $2.10 \times 6.00 =$ mq. 12.60

Sup. Prosp. (ml. $2.20 + 2.05$)/2 x ml. 2.10 = mq. 4.46
(ml. $2.20 + 2.05$)/2 x ml. 6.00 = mq. 12.75
(ml. $2.20 + 3.05$)/2 x ml. 2.10 = mq. 5.51
(ml. $2.20 + 3.05$)/2 x ml. 6.00 = mq. 15.75
mq. 38.47

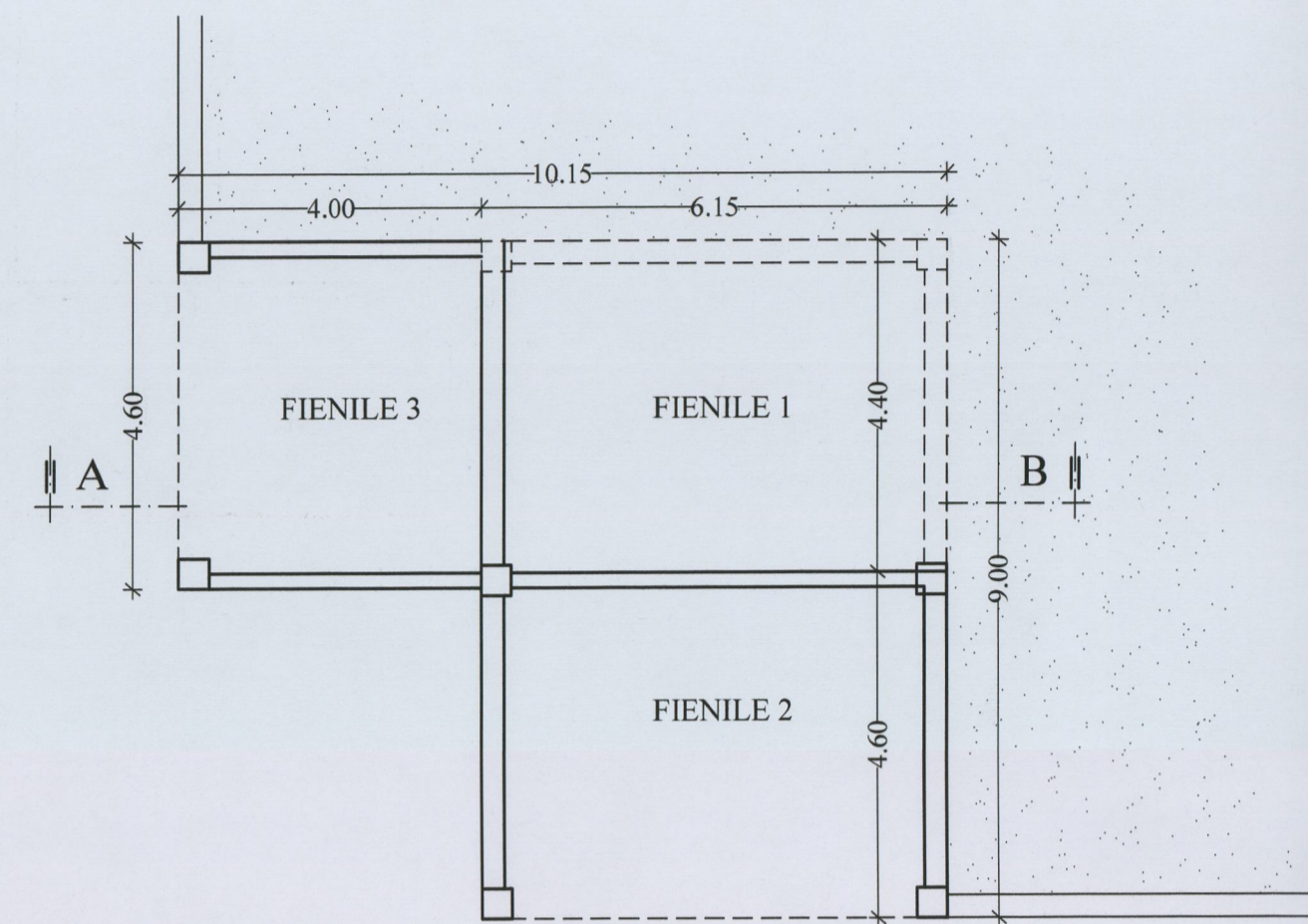
Perimetro ml. $2.10 + 6.00 + 2.10 + 6.00 =$ ml. 16.20

Volume mq. 38.47 / ml. 16.20 = ml. 2.37 x mq. 12.60 = mc. 29.86

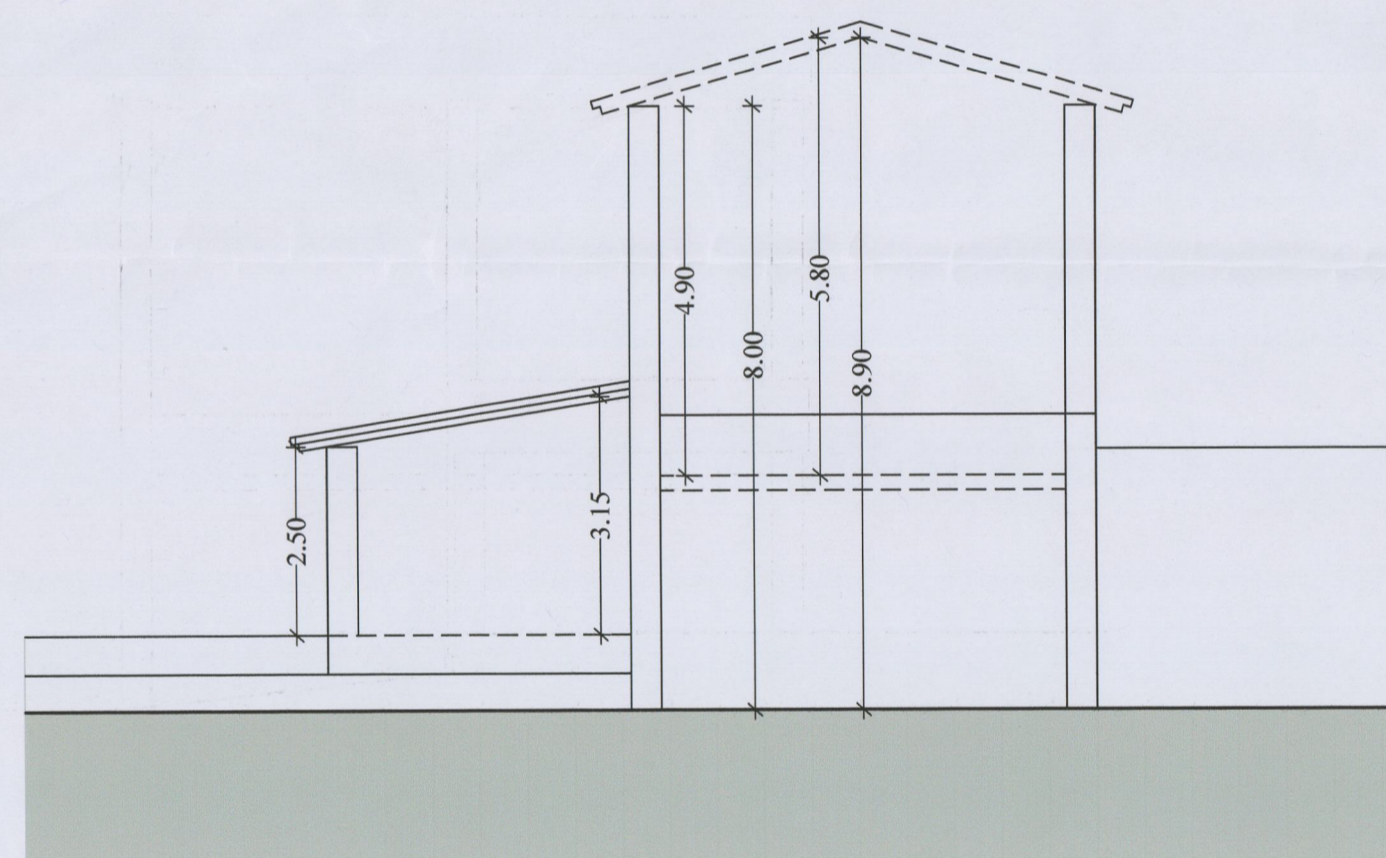
TOTALE MC. 557.34

FABBRICATO "B"

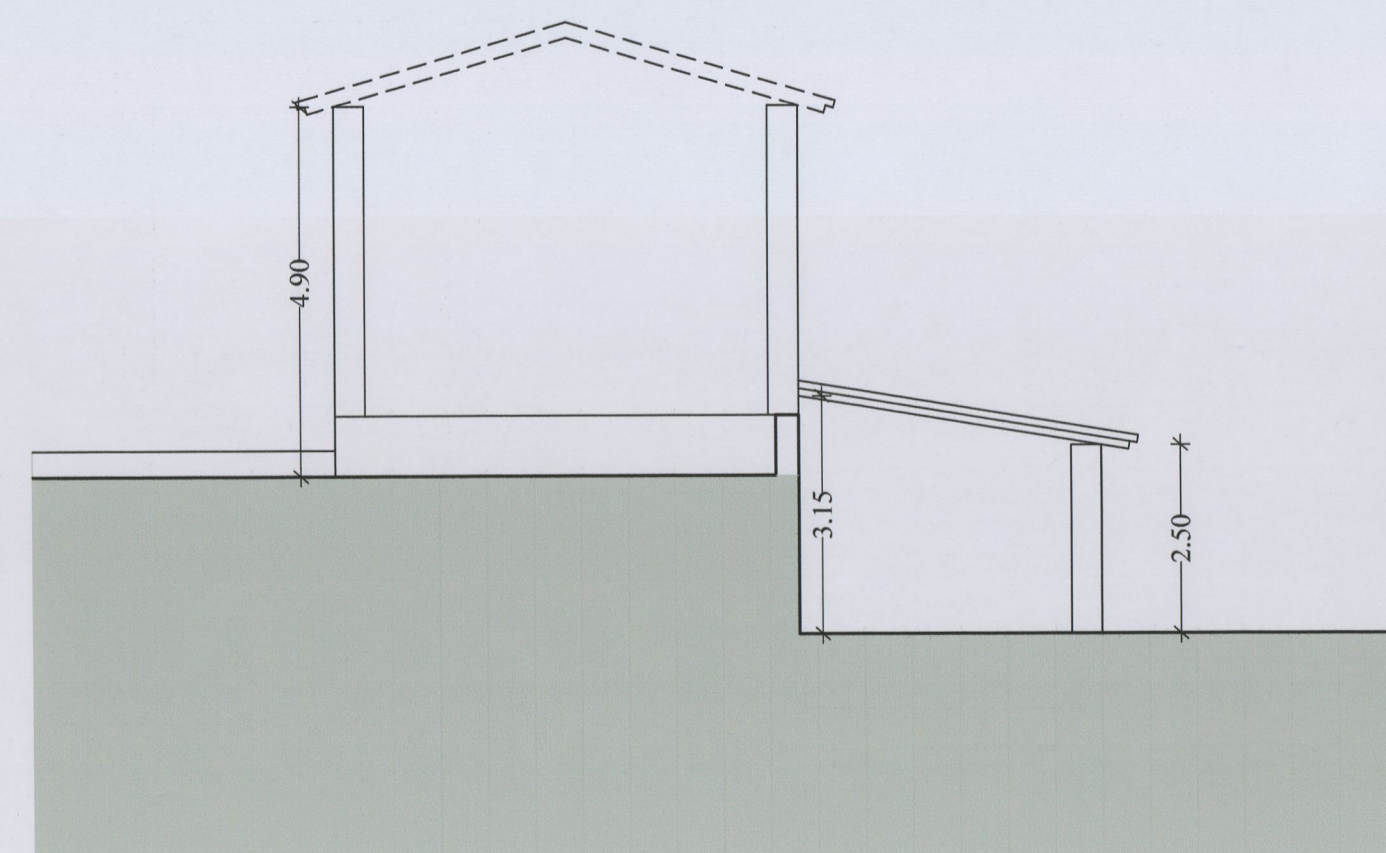
PIANTA - R = 1:100



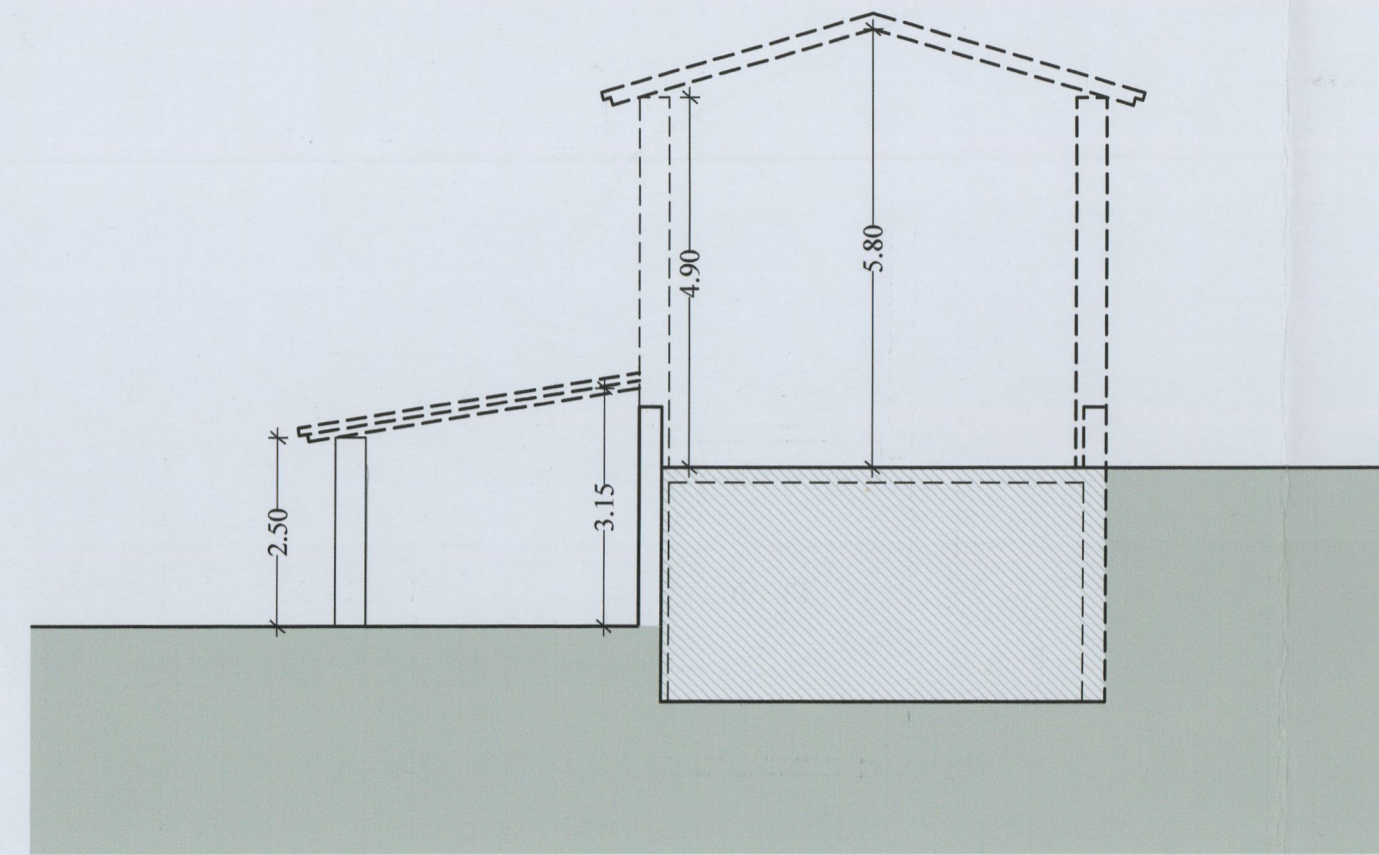
PROSPETTO SUD - R = 1:100



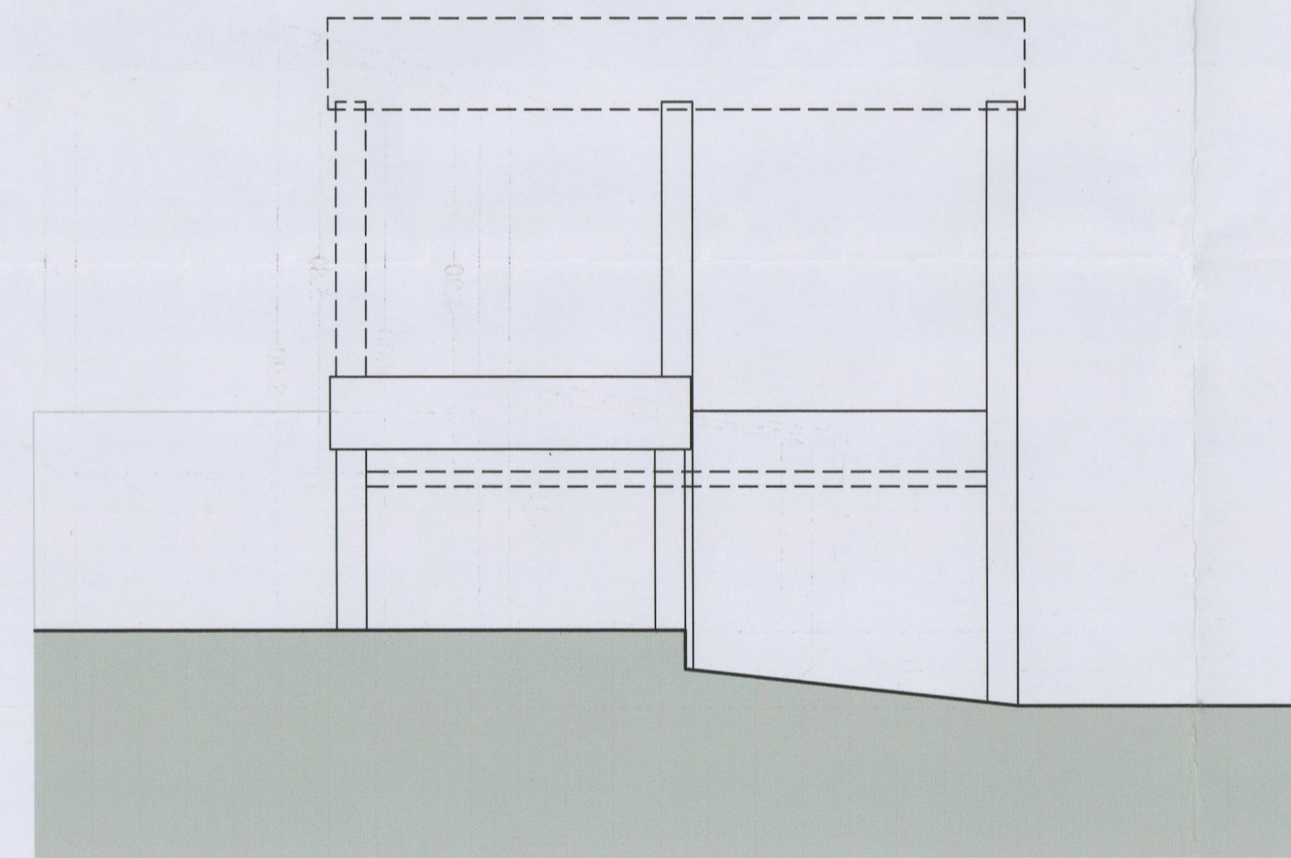
PROSPETTO NORD - R = 1:100



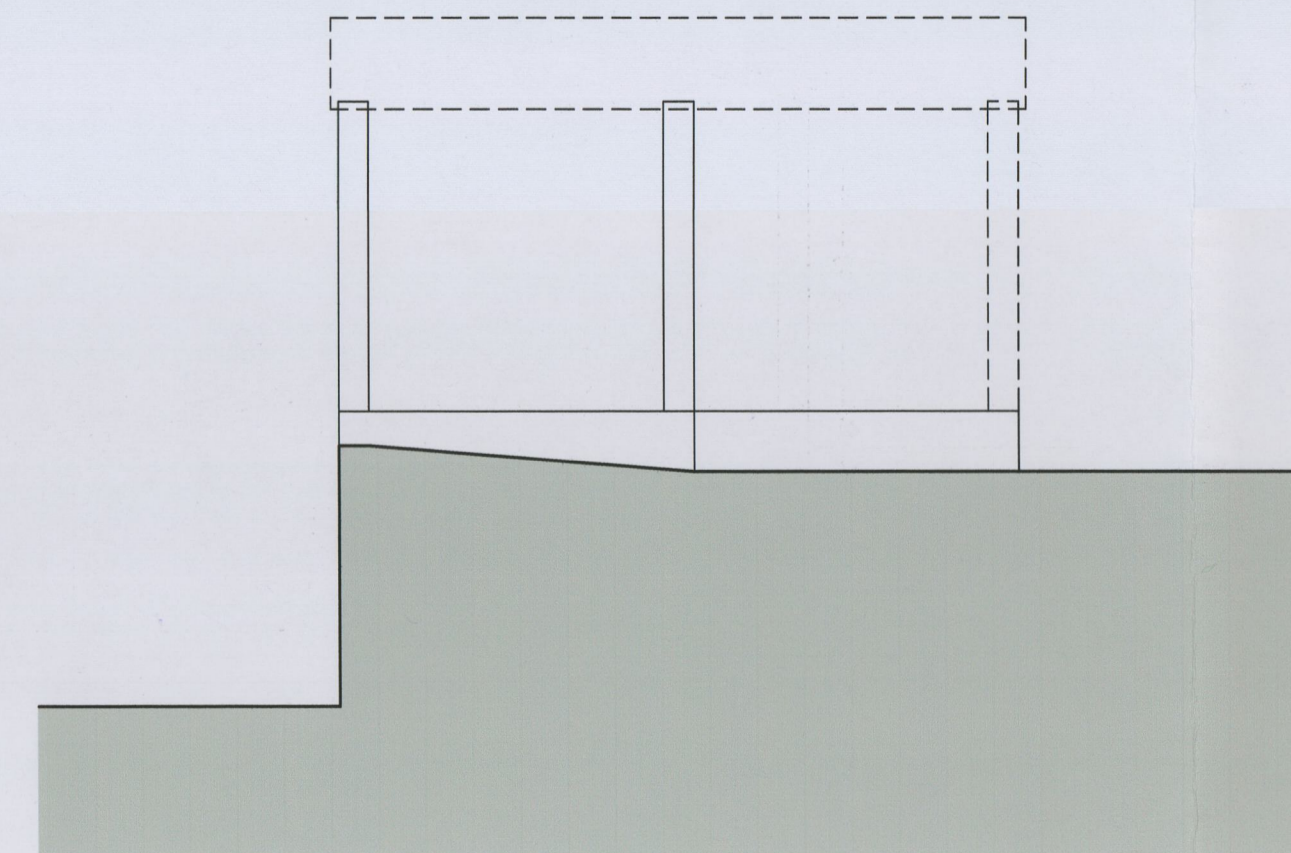
SEZIONE A-B - R = 1:100



PROSPETTO OVEST - R = 1:100

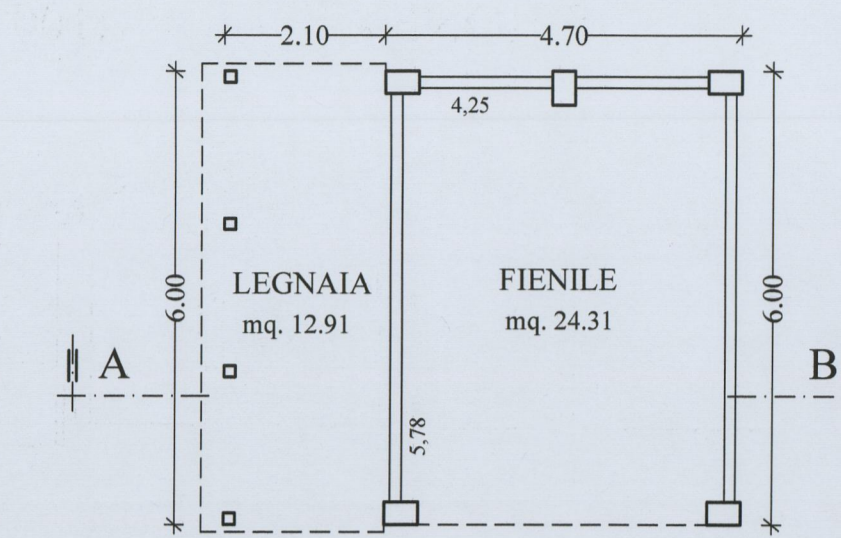


PROSPETTO EST - R = 1:100

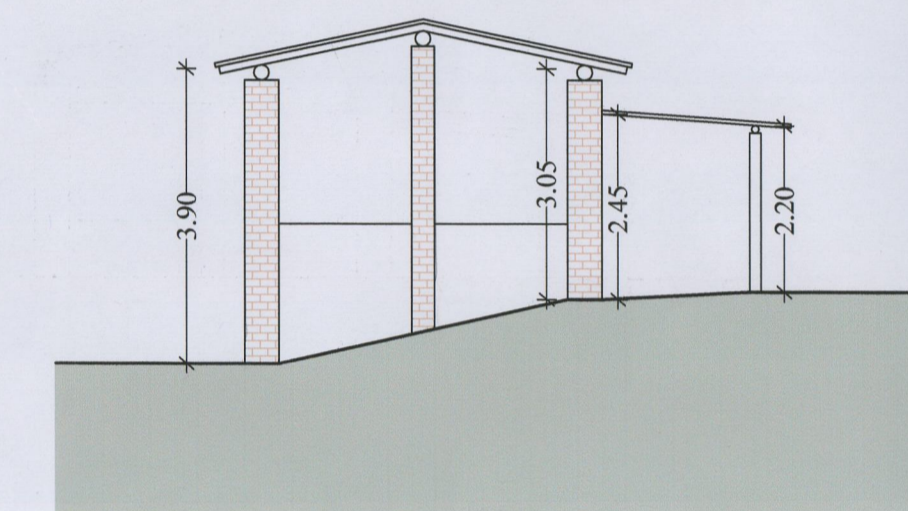


FABBRICATO "C"

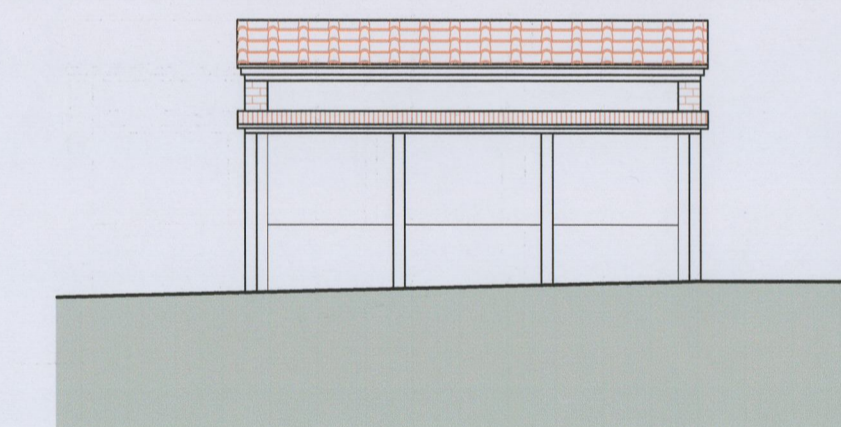
PIANTA - R = 1:100



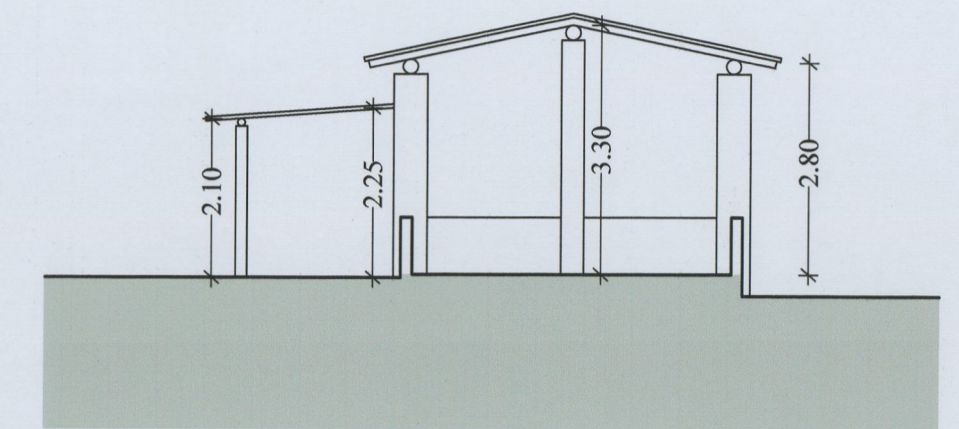
PROSPETTO NORD - R = 1:100



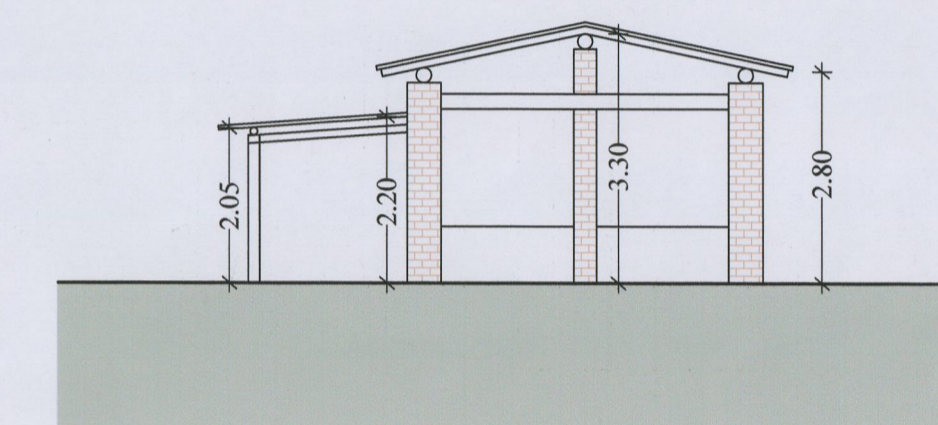
PROSPETTO EST - R = 1:100



SEZIONE A-B - R = 1:100



PROSPETTO SUD - R = 1:100



PROSPETTO OVEST - R = 1:100

