



COMUNE DI
CERTALDO

Piano Operativo Comunale

Art. 95 L.R. 65/2014

IL SINDACO DEL COMUNE DI CERTALDO

Giacomo Cucini

UFFICIO DI PIANO

Ufficio Urbanistica Comunale

Arch. Carlo Vanni
Geom. Mariarosa Cantini
Dott.ssa Silvia Santini

ARTU' srl

Urb. PhD. Matteo Scamporrino
Arch. PhD. Luca di Figlia

GHEA ENGINEERING & CONSULTING S.R.L.

Geol. Luca Pagliuzzi
Geol. Serena Vannetti
Aspetti idraulici
Ing. Giacomo Gazzini
Hydrogeo Ingegneria s.r.l.

Aspetti giuridici

Avv. Agostino Zanelli Quarantini

SUPPORTO SCIENTIFICO

Laboratorio Regional Design
Dipartimento di Architettura
Università degli Studi di Firenze

Responsabile scientifico
Prof. Valeria Lingua

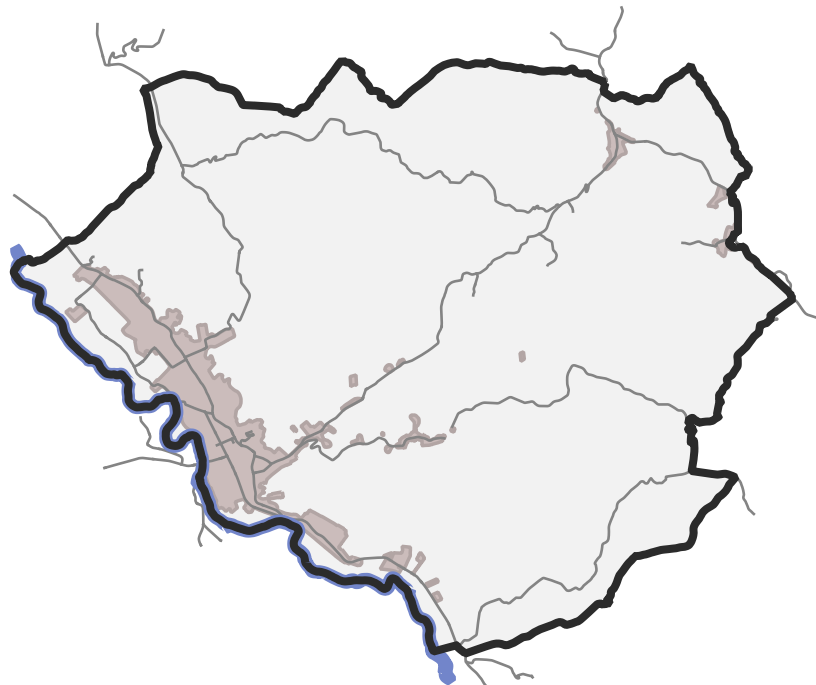
Prof. Giuseppe De Luca
Arch. PhD. Michela Chiti
Urb. Elisa Caruso

COLLABORATORI

Dott. Urb. Lorenzo Bartali

GARANTE PER LA COMUNICAZIONE

Dott. Filippo Belli



Data Adozione: 11/02/2019

Data Approvazione:

COLLABORATORI

CARTA DELLE FREQUENZE FONDAMENTALI

SCALA

1 : 10.000

ELABORATO

DATA REVISIONE

Marzo 2020

QC.MZS12

ELABORATO MODIFICATO A SEGUITO DELLE OSSERVAZIONI ACCOLTE

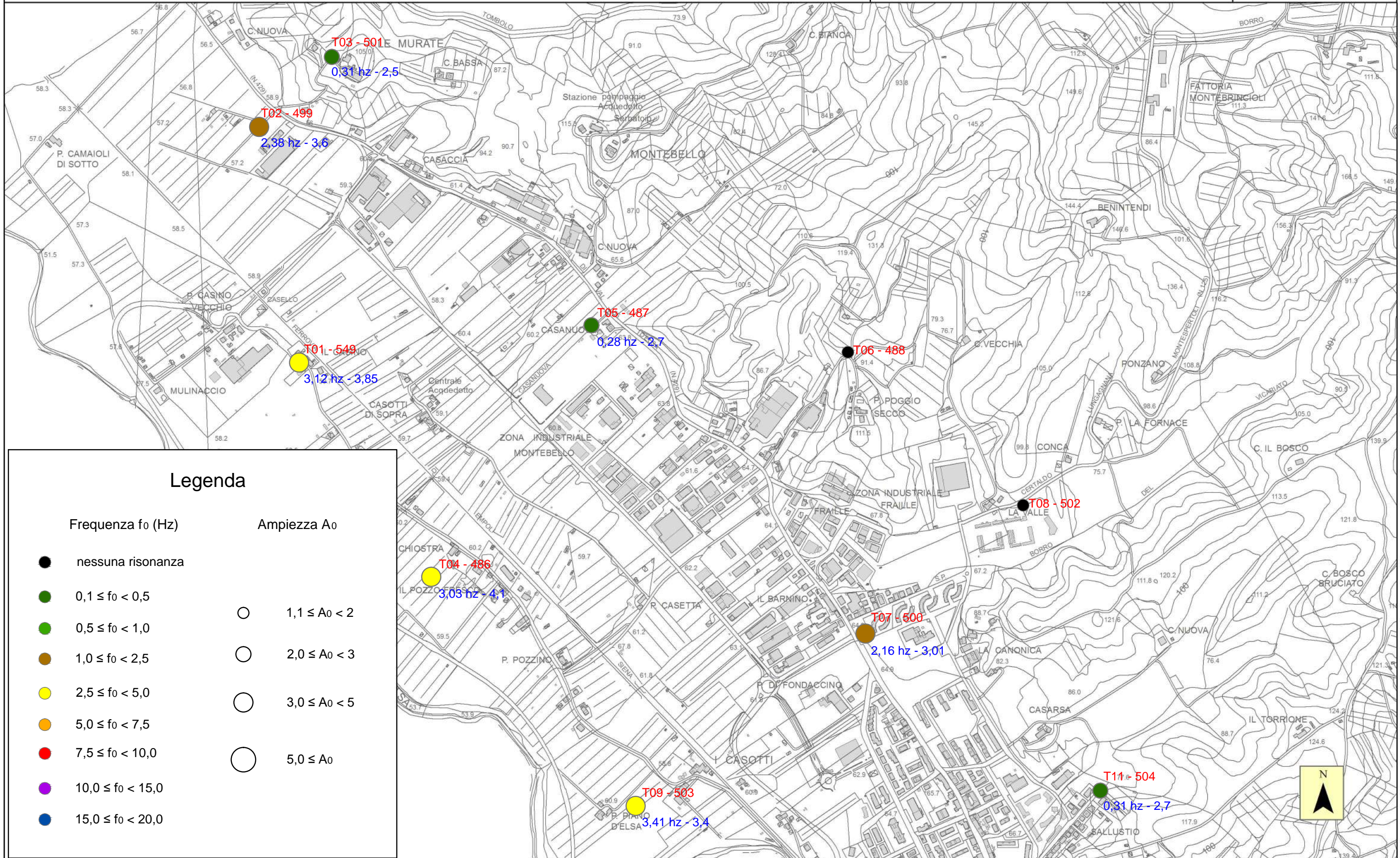


P PIANO
ianificare
O OPERATIVO
oggi
C COMUNALE
ertaldo



CARTA DELLE FREQUENZE - CERTALDO NORD

SCALA 1:10 000



Legenda

Frequenza f_0 (Hz)

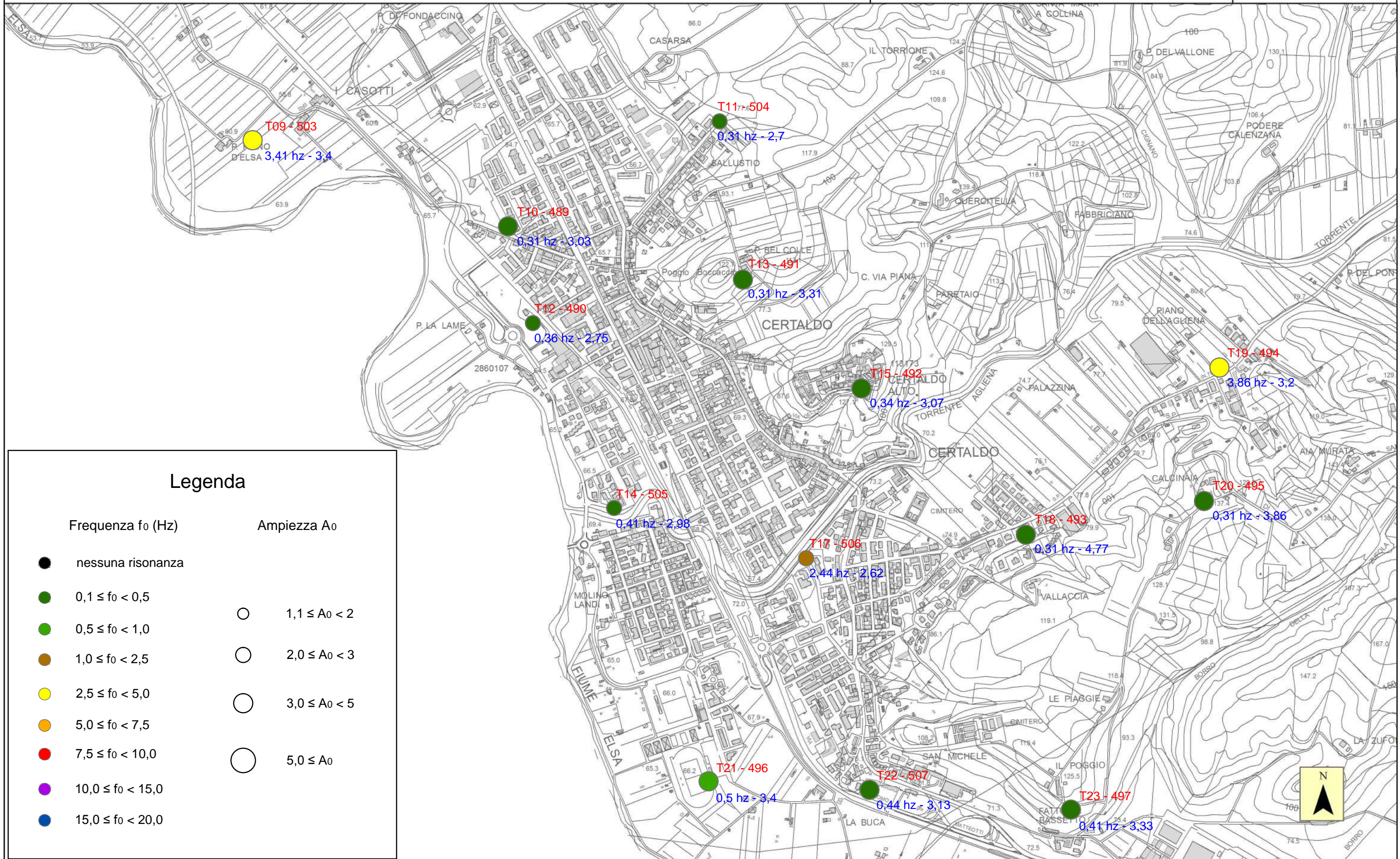
Ampiezza A_0

- nessuna risonanza
- $0,1 \leq f_0 < 0,5$
- $0,5 \leq f_0 < 1,0$
- $1,0 \leq f_0 < 2,5$
- $2,5 \leq f_0 < 5,0$
- $5,0 \leq f_0 < 7,5$
- $7,5 \leq f_0 < 10,0$
- $10,0 \leq f_0 < 15,0$
- $15,0 \leq f_0 < 20,0$

- $1,1 \leq A_0 < 2$
- $2,0 \leq A_0 < 3$
- $3,0 \leq A_0 < 5$
- $5,0 \leq A_0$

CARTA DELLE FREQUENZE - CERTALDO CENTRO

SCALA 1:10 000



Legenda

Frequenza f_0 (Hz)

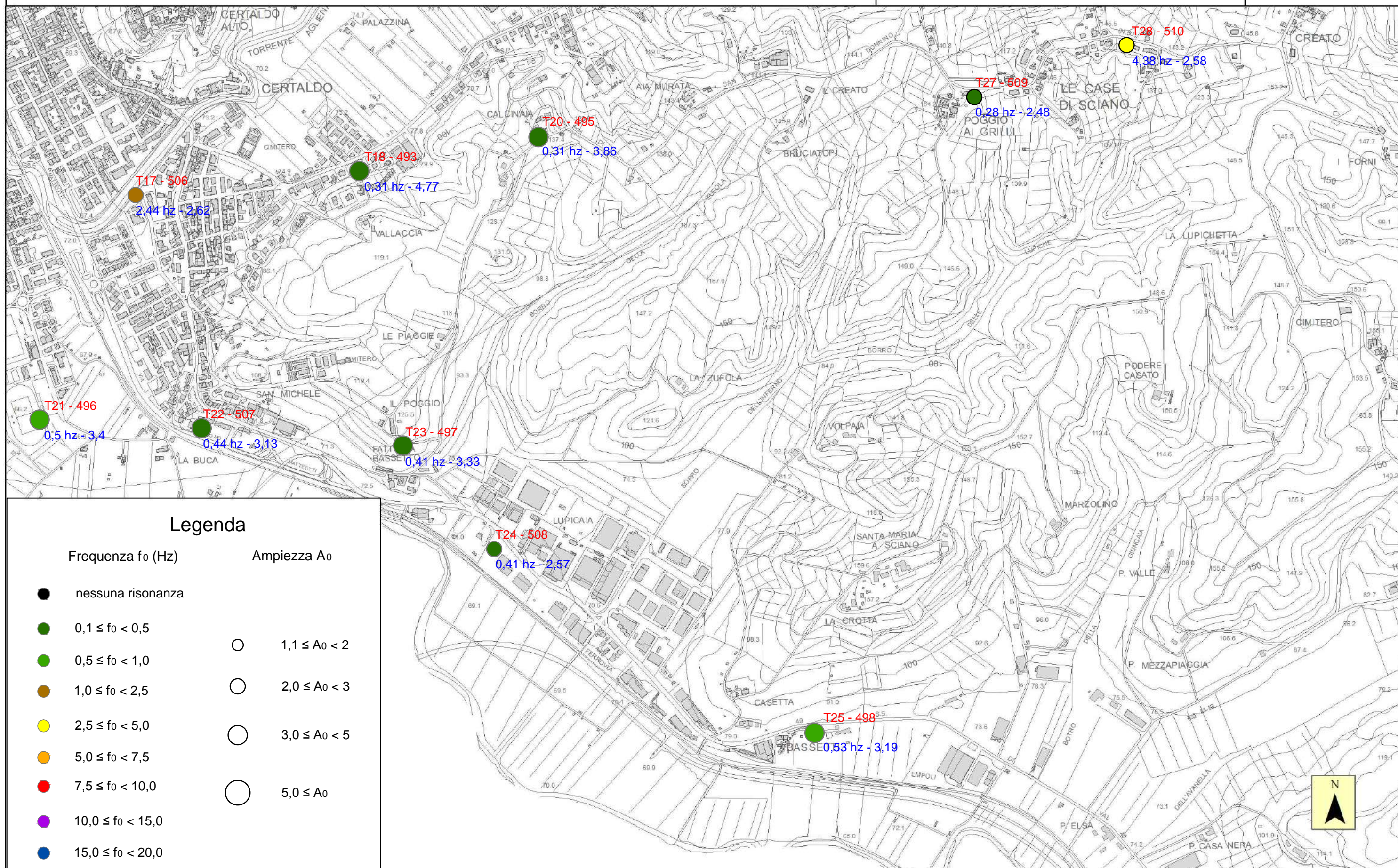
Ampiezza A_0

- nessuna risonanza
- $0,1 \leq f_0 < 0,5$
- $0,5 \leq f_0 < 1,0$
- $1,0 \leq f_0 < 2,5$
- $2,5 \leq f_0 < 5,0$
- $5,0 \leq f_0 < 7,5$
- $7,5 \leq f_0 < 10,0$
- $10,0 \leq f_0 < 15,0$
- $15,0 \leq f_0 < 20,0$

- $1,1 \leq A_0 < 2$
- $2,0 \leq A_0 < 3$
- $3,0 \leq A_0 < 5$
- $5,0 \leq A_0$

CARTA DELLE FREQUENZE - CERTALDO SUD

SCALA 1:10 000



Legenda

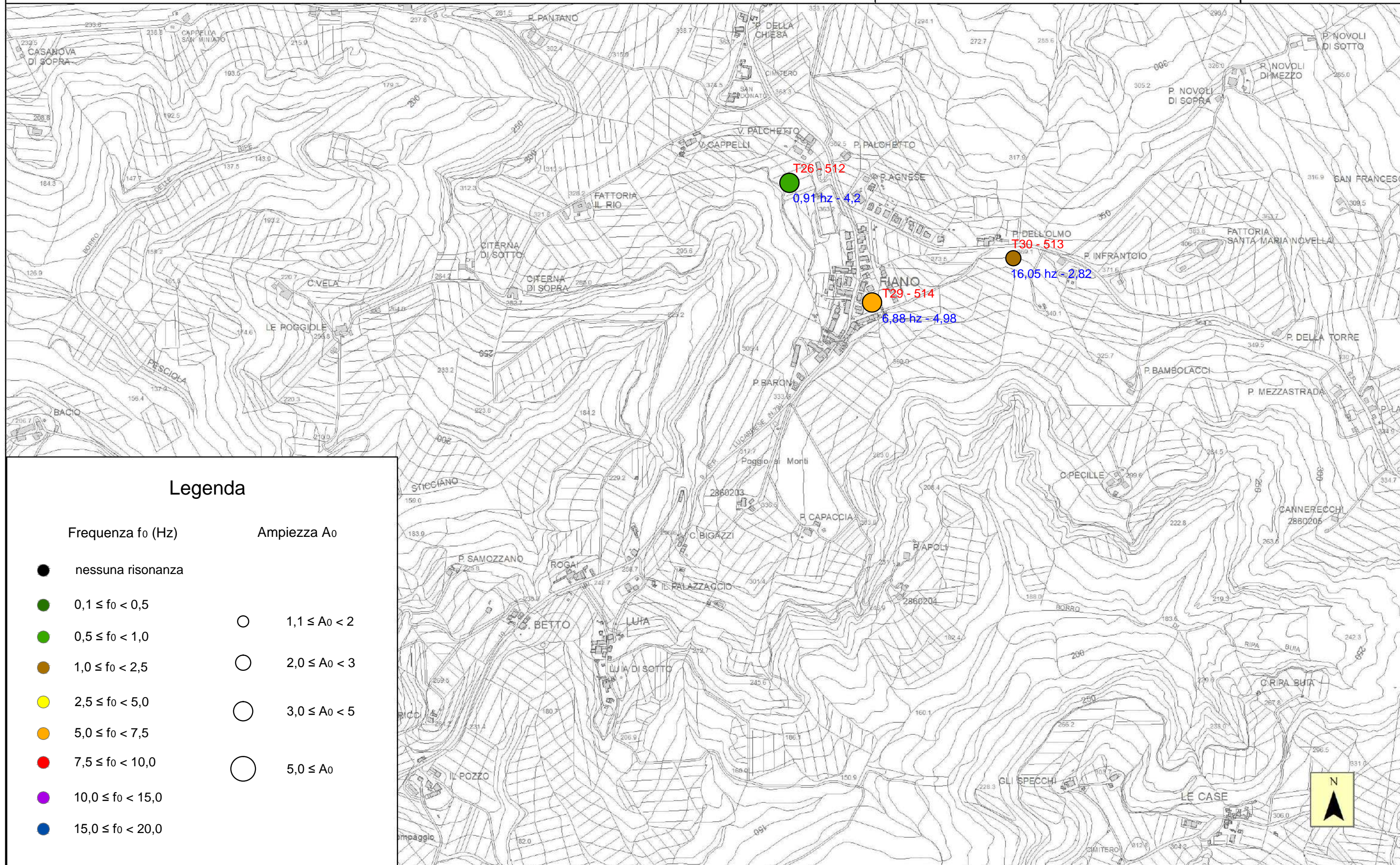
Frequenza f_0 (Hz)

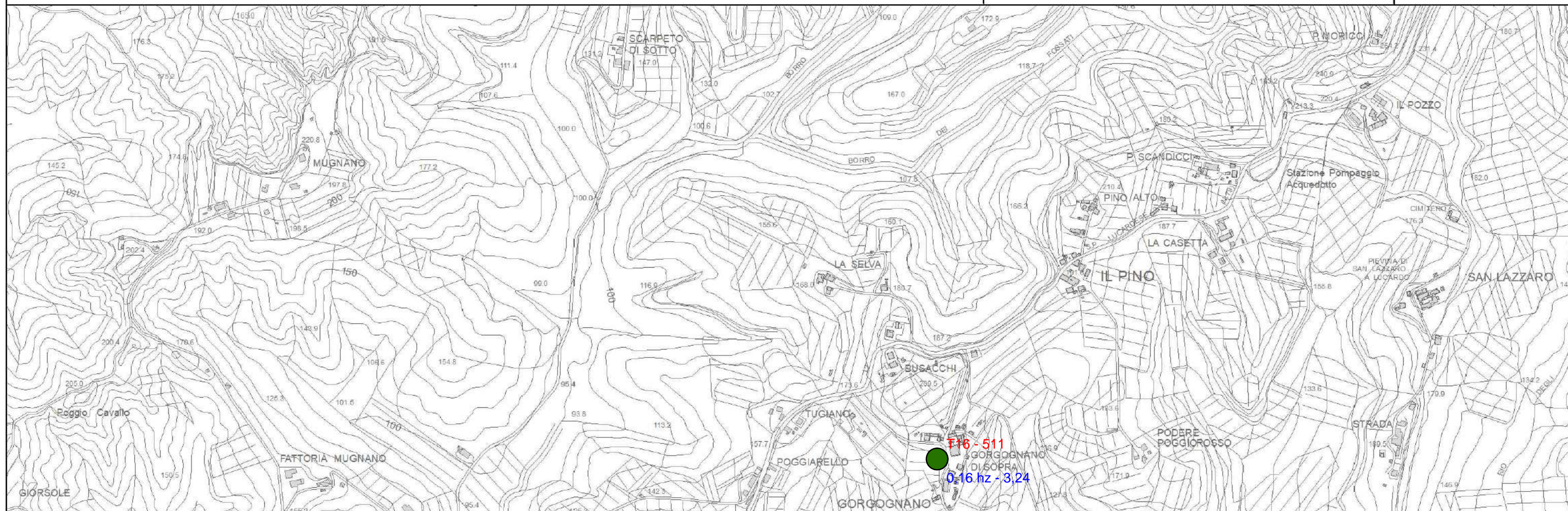
Ampiezza A_0

- | | |
|--------------------------|----------------------|
| ● nessuna risonanza | ○ $1,1 \leq A_0 < 2$ |
| ● $0,1 \leq f_0 < 0,5$ | ○ $2,0 \leq A_0 < 3$ |
| ● $0,5 \leq f_0 < 1,0$ | ○ $3,0 \leq A_0 < 5$ |
| ● $1,0 \leq f_0 < 2,5$ | ○ $5,0 \leq A_0$ |
| ● $2,5 \leq f_0 < 5,0$ | |
| ● $5,0 \leq f_0 < 7,5$ | |
| ● $7,5 \leq f_0 < 10,0$ | |
| ● $10,0 \leq f_0 < 15,0$ | |
| ● $15,0 \leq f_0 < 20,0$ | |

CARTA DELLE FREQUENZE - LOC. FIANO

SCALA 1:10 000



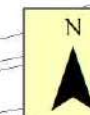


Legenda

Frequenza f_0 (Hz)

Ampiezza A_0

- | | |
|--------------------------|----------------------|
| ● nessuna risonanza | |
| ● $0,1 \leq f_0 < 0,5$ | ○ $1,1 \leq A_0 < 2$ |
| ● $0,5 \leq f_0 < 1,0$ | ○ $2,0 \leq A_0 < 3$ |
| ● $1,0 \leq f_0 < 2,5$ | ○ $3,0 \leq A_0 < 5$ |
| ● $2,5 \leq f_0 < 5,0$ | ○ $5,0 \leq A_0$ |
| ● $5,0 \leq f_0 < 7,5$ | |
| ● $7,5 \leq f_0 < 10,0$ | |
| ● $10,0 \leq f_0 < 15,0$ | |
| ● $15,0 \leq f_0 < 20,0$ | |



CARTA DELLE FREQUENZE - LOC. MARCIALLA

SCALA 1:10.000

