

Attuazione dell'articolo 11 della legge 24 giugno 2009, n. 77

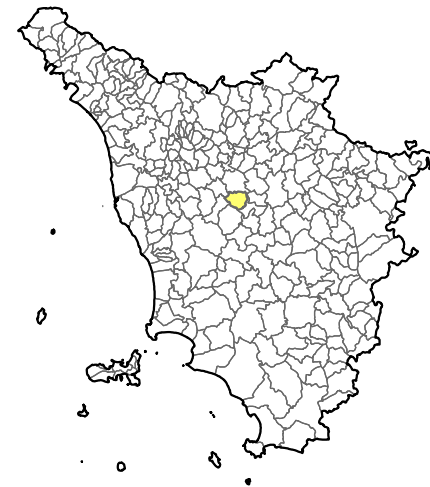
MICROZONAZIONE SISMICA

Carta delle Frequenze Fondamentali dei depositi

Certaldo e Frazioni

Scala 1:5.000

Regione Toscana
Comune di Certaldo



Regione Toscana

Soggetto realizzatore



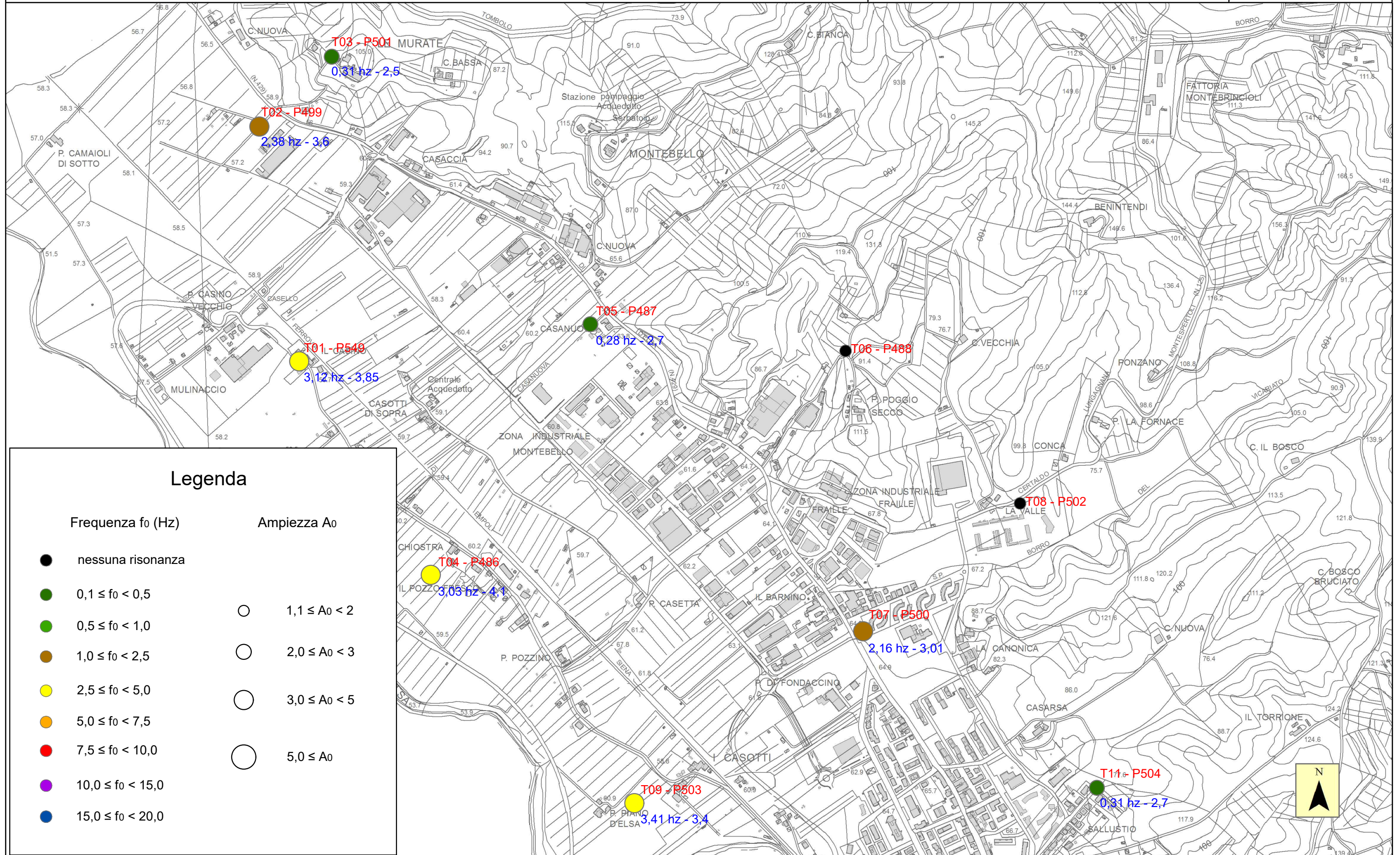
Lungarno Guido Reni n. 55
52027 San Giovanni Valdarno (Ar)
Tel: 055.9155832 - mail: info@gha.it

Data

20/09/2018

CARTA DELLE FREQUENZE - CERTALDO NORD

SCALA 1:10 000



Legenda

Frequenza f_0 (Hz)

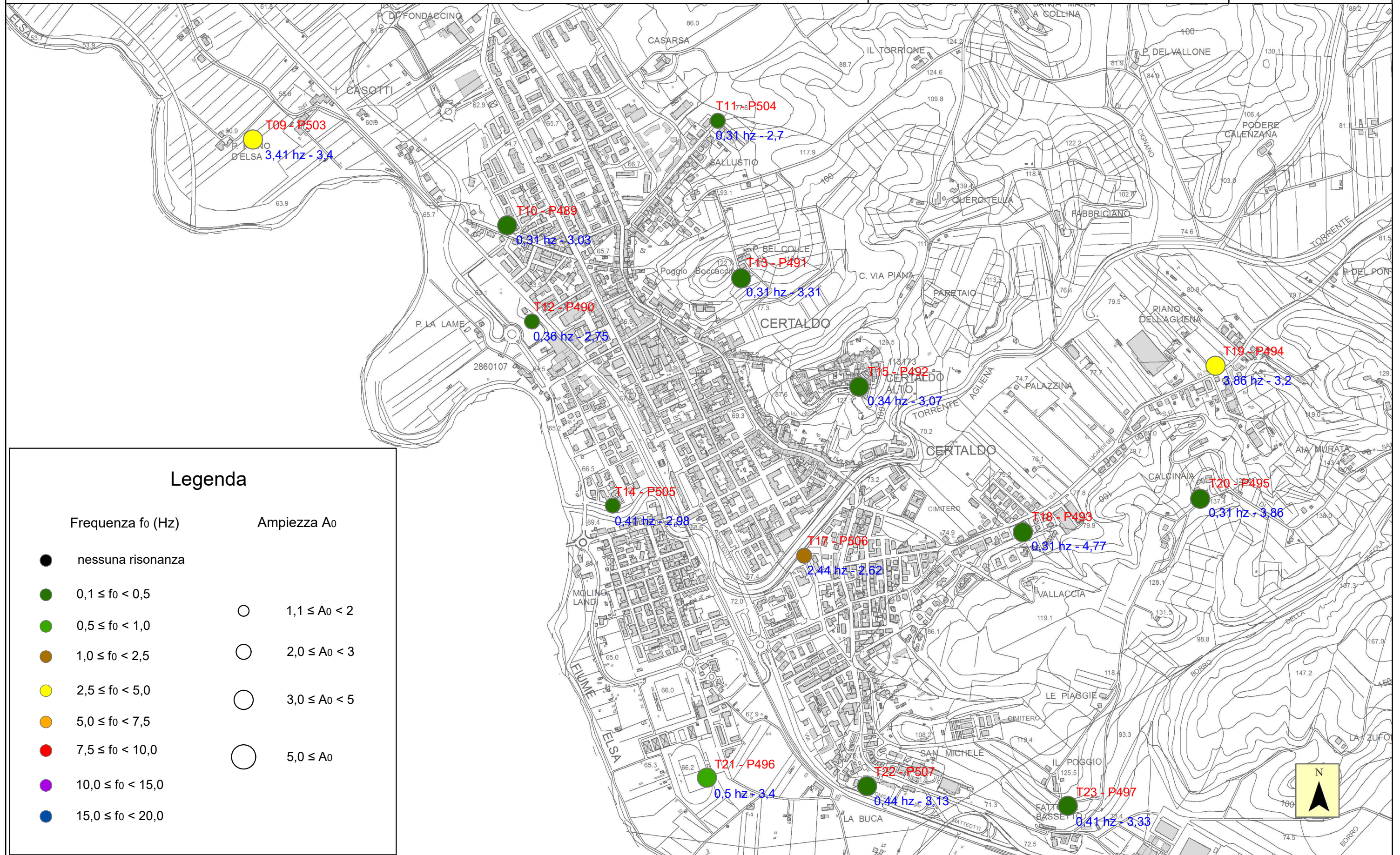
Ampiezza A_0

- nessuna risonanza
- 0,1 ≤ f_0 < 0,5
- 0,5 ≤ f_0 < 1,0
- 1,0 ≤ f_0 < 2,5
- 2,5 ≤ f_0 < 5,0
- 5,0 ≤ f_0 < 7,5
- 7,5 ≤ f_0 < 10,0
- 10,0 ≤ f_0 < 15,0
- 15,0 ≤ f_0 < 20,0

- 1,1 ≤ A_0 < 2
- 2,0 ≤ A_0 < 3
- 3,0 ≤ A_0 < 5
- 5,0 ≤ A_0

CARTA DELLE FREQUENZE - CERTALDO CENTRO

SCALA 1:10 000



Legenda

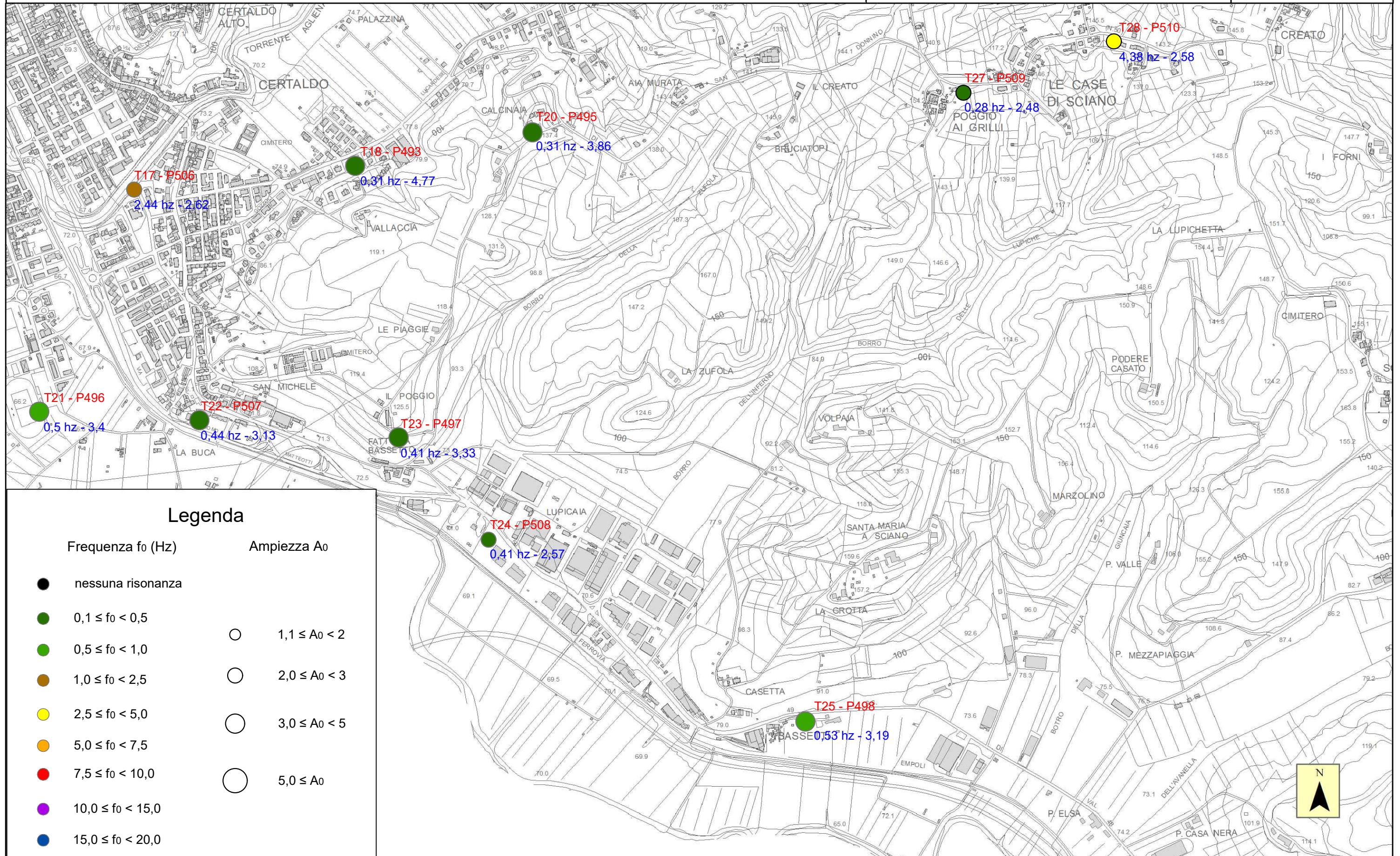
Frequenza f_0 (Hz)

Ampiezza A_0

- | | |
|--------------------------|----------------------|
| ● nessuna risonanza | ○ $1,1 \leq A_0 < 2$ |
| ● $0,1 \leq f_0 < 0,5$ | ○ $2,0 \leq A_0 < 3$ |
| ● $0,5 \leq f_0 < 1,0$ | ○ $3,0 \leq A_0 < 5$ |
| ● $1,0 \leq f_0 < 2,5$ | ○ $5,0 \leq A_0$ |
| ● $2,5 \leq f_0 < 5,0$ | |
| ● $5,0 \leq f_0 < 7,5$ | |
| ● $7,5 \leq f_0 < 10,0$ | |
| ● $10,0 \leq f_0 < 15,0$ | |
| ● $15,0 \leq f_0 < 20,0$ | |

CARTA DELLE FREQUENZE - CERTALDO SUD

SCALA 1:10 000



Legenda

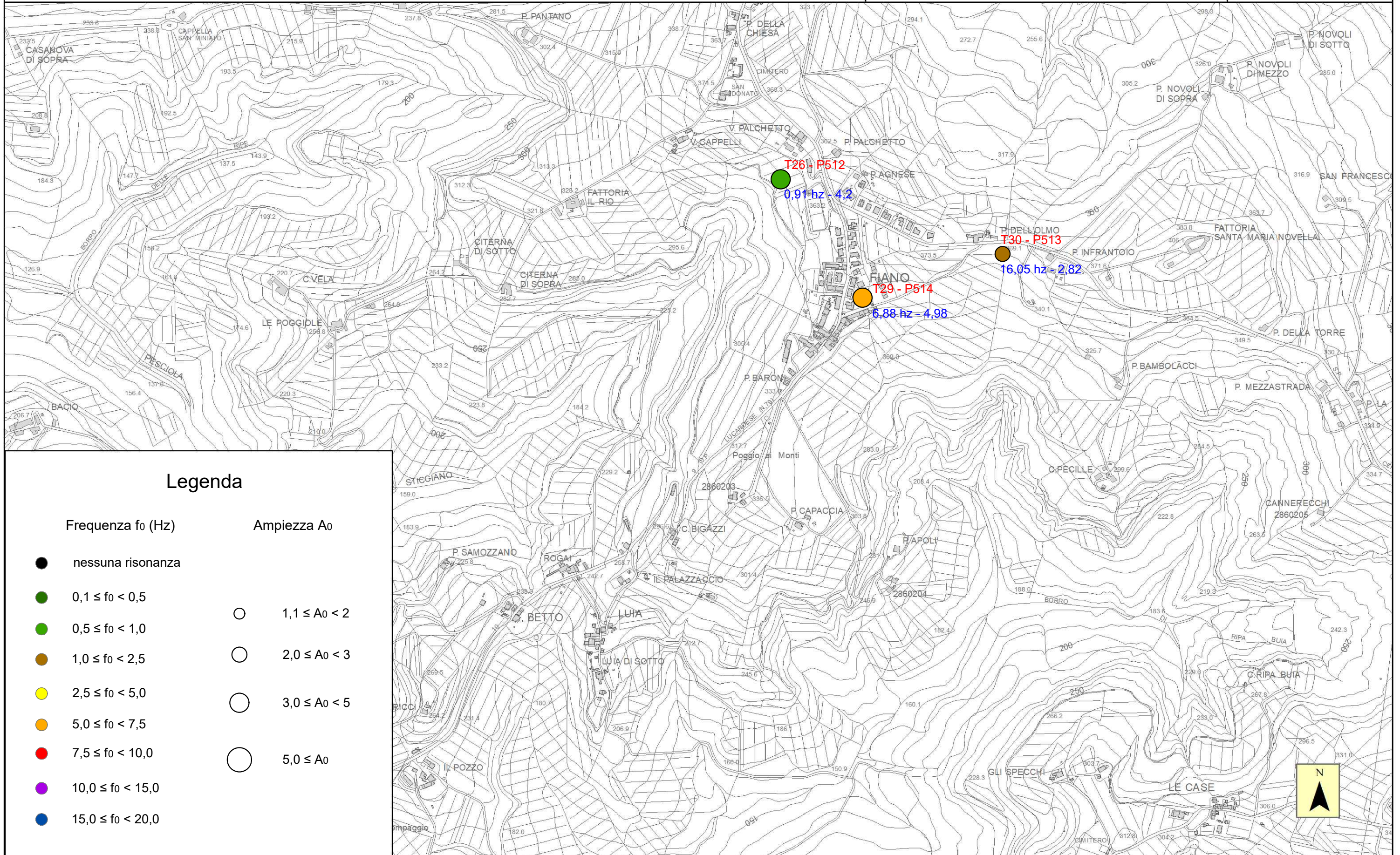
Frequenza f_0 (Hz)

Ampiezza A_0

- | | |
|-----------------------|-------------------|
| ● nessuna risonanza | ○ 1,1 ≤ A_0 < 2 |
| ● 0,1 ≤ f_0 < 0,5 | ○ 2,0 ≤ A_0 < 3 |
| ● 0,5 ≤ f_0 < 1,0 | ○ 3,0 ≤ A_0 < 5 |
| ● 1,0 ≤ f_0 < 2,5 | ○ 5,0 ≤ A_0 |
| ● 2,5 ≤ f_0 < 5,0 | |
| ● 5,0 ≤ f_0 < 7,5 | |
| ● 7,5 ≤ f_0 < 10,0 | |
| ● 10,0 ≤ f_0 < 15,0 | |
| ● 15,0 ≤ f_0 < 20,0 | |

CARTA DELLE FREQUENZE - LOC. FIANO

SCALA 1:10 000



Legenda

Frequenza f_0 (Hz)

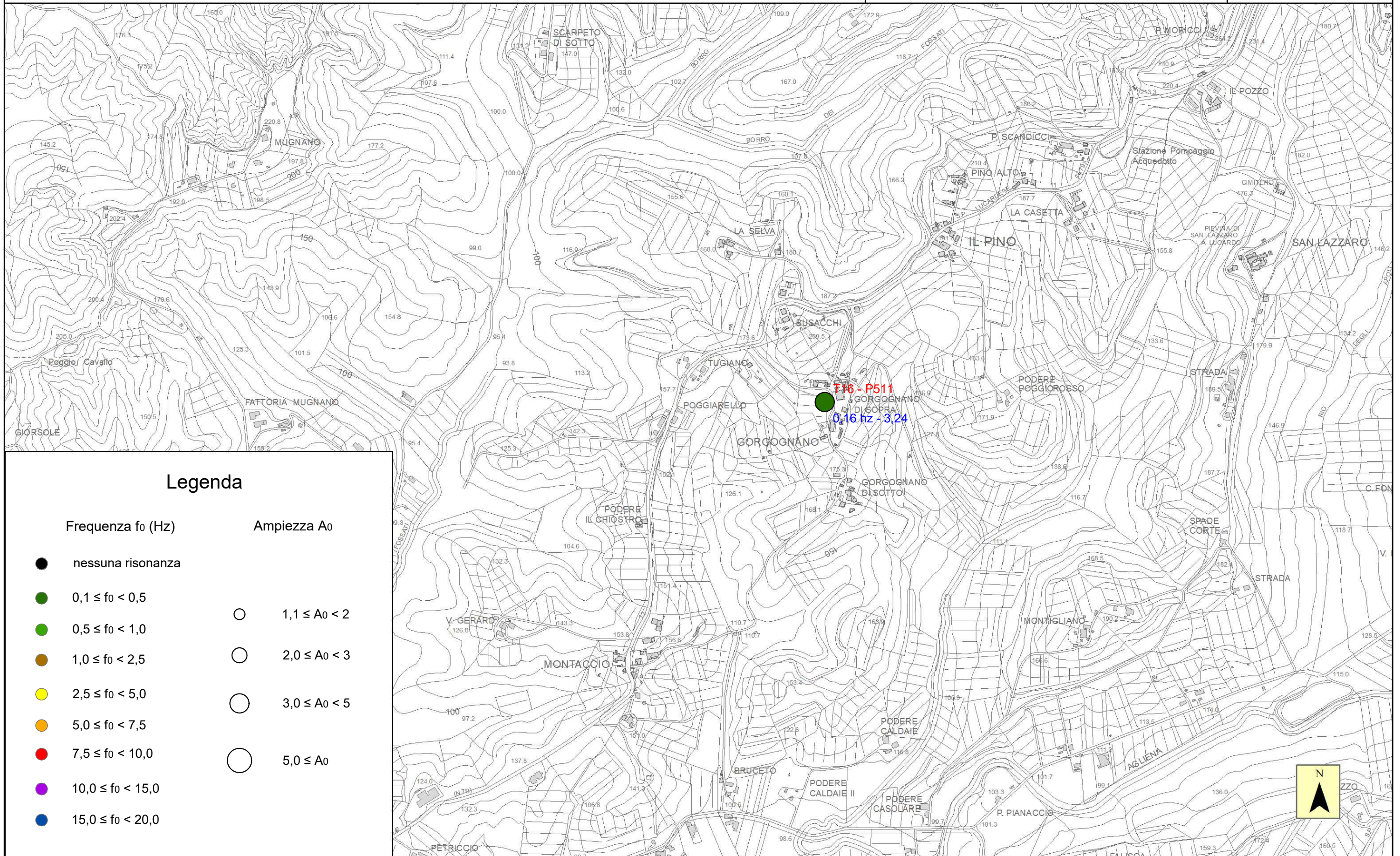
Ampiezza A_0

- nessuna risonanza
- $0,1 \leq f_0 < 0,5$
- $0,5 \leq f_0 < 1,0$
- $1,0 \leq f_0 < 2,5$
- $2,5 \leq f_0 < 5,0$
- $5,0 \leq f_0 < 7,5$
- $7,5 \leq f_0 < 10,0$
- $10,0 \leq f_0 < 15,0$
- $15,0 \leq f_0 < 20,0$

- $1,1 \leq A_0 < 2$
- $2,0 \leq A_0 < 3$
- $3,0 \leq A_0 < 5$
- $5,0 \leq A_0$

CARTA DELLE FREQUENZE - CERTALDO - LOC. GORGOGNANO

SCALA 1:10 000



Legenda

Frequenza f_0 (Hz)

Ampiezza A_0

- | | | | |
|---|------------------------|---|--------------------|
| ● | nessuna risonanza | | |
| ● | $0,1 \leq f_0 < 0,5$ | ○ | $1,1 \leq A_0 < 2$ |
| ● | $0,5 \leq f_0 < 1,0$ | ○ | $2,0 \leq A_0 < 3$ |
| ● | $1,0 \leq f_0 < 2,5$ | ○ | $3,0 \leq A_0 < 5$ |
| ● | $2,5 \leq f_0 < 5,0$ | ○ | $5,0 \leq A_0$ |
| ● | $5,0 \leq f_0 < 7,5$ | | |
| ● | $7,5 \leq f_0 < 10,0$ | | |
| ● | $10,0 \leq f_0 < 15,0$ | | |
| ● | $15,0 \leq f_0 < 20,0$ | | |

